

# TWIN TRACK: THE REVOLUTION INSIDE YOUR PELLET MILL



START YOUR  
FUTURE NOW



The revolution inside

CPM now revolutionizes what your pellet mill can do, with Twin Track. Our innovative, patent pending technology transforms the production process to reduce energy demand, ensure consistent pellet quality and boost pellet mill capacity.

It all happens inside your pellet mill. Twin Track uses two rollers and, uniquely, each roller has its own track. Our system pushes pellets with one long, energy-efficient push per die revolution. This means less energy (in kWh/t) is needed to create the pellet with Twin Track than with 2 or 3-roller machines – which push 2 or 3 times per revolution.

And with Twin Track, we've also increased the number of holes in each die by a massive 43%. This creates a wider layer of raw wood material, which in turn produces a greater number of pellets per revolution.

#### Greater energy savings and greater capacity

With Twin Track you can find the optimal balance of operation for your business: reduce energy consumption, and/or see greater pellet output when Twin Track is used with appropriate upstream and downstream equipment.

Since our technology also uses less force in the pellet production process, it means there's less wear on your dies, which lowers maintenance costs and decreases TCO.



#### TWIN TRACK BRINGS YOU SIGNIFICANT SAVINGS

**Energy savings**  
(based on 6 t/hour x 5kWh/t saving x 8000 hours/year):

**240,000 kWh**  
per year per pellet mill

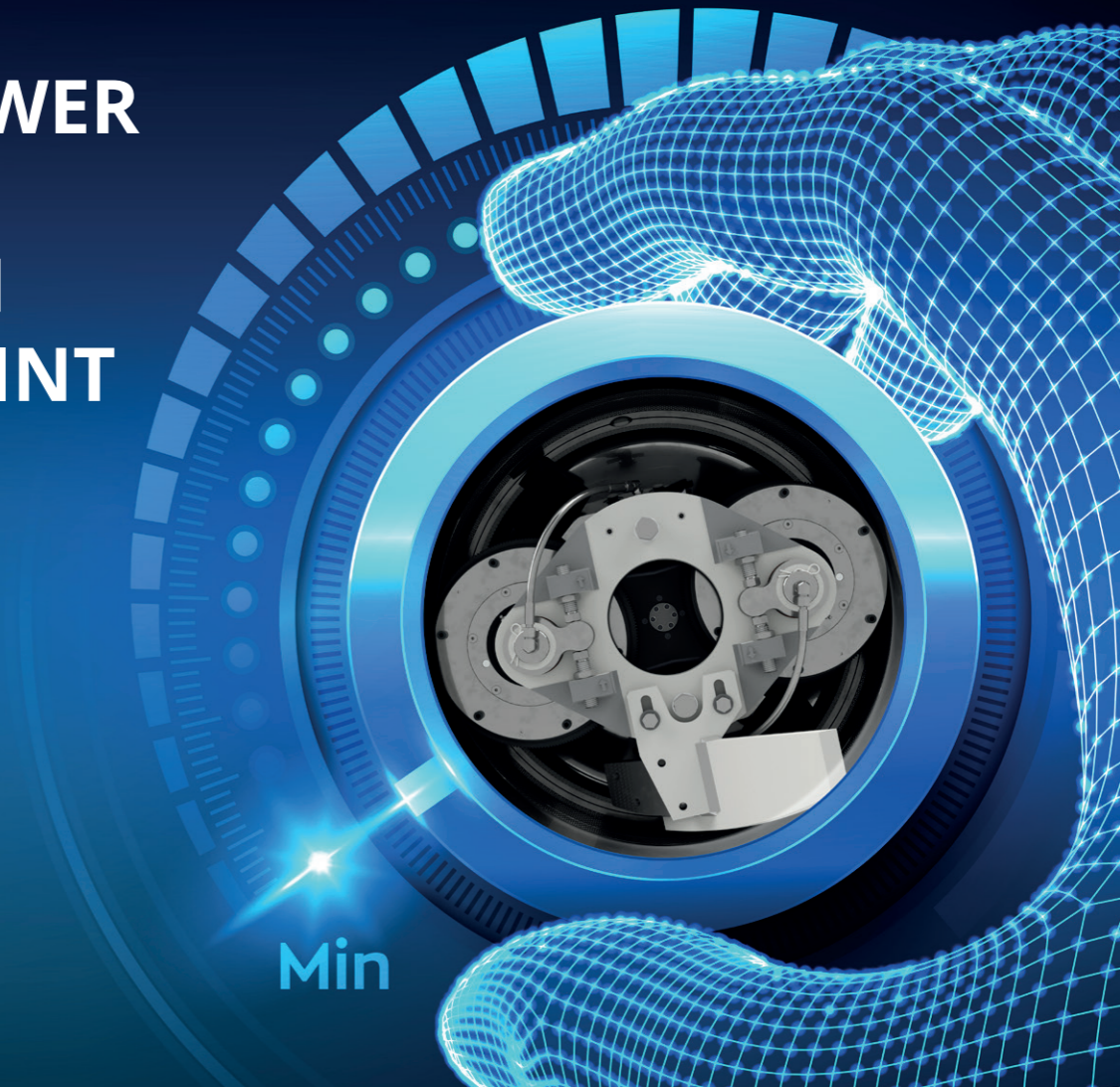
**CO<sub>2</sub> emission reduction**  
(based on kWh above and with 0.401 kg CO<sub>2</sub>/kWh):

**96,240 kg CO<sub>2</sub>**  
per year per pellet mill

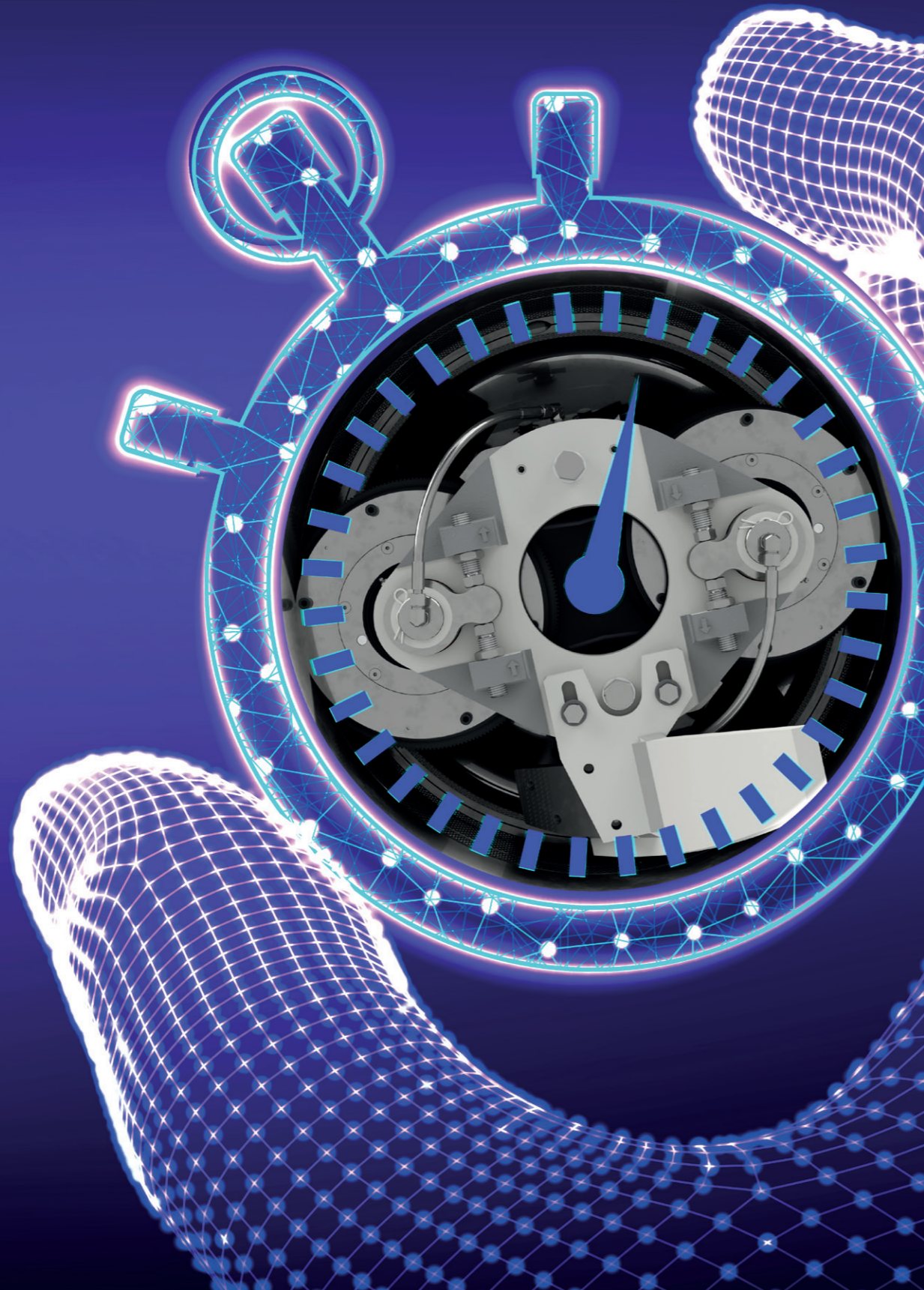


**INCREASE  
YOUR  
PRODUCTION  
CAPACITY**

**AND LOWER  
YOUR  
CARBON  
FOOTPRINT**







# OPTIMIZED PRESSURE, TEMPERATURE AND RETENTION TIME



Your wood pellet production depends entirely on these three factors, and they can be hard to control. Our lengthy research and subsequent testing shows that Twin Track's increased die surface area gives more retention time in the die.

This means there's more time for natural binding properties (or added binders) to take effect. Since pellet mills inevitably see wide variations in raw wood materials, this longer retention time helps to deal with different grades of materials which are often found in the production process.

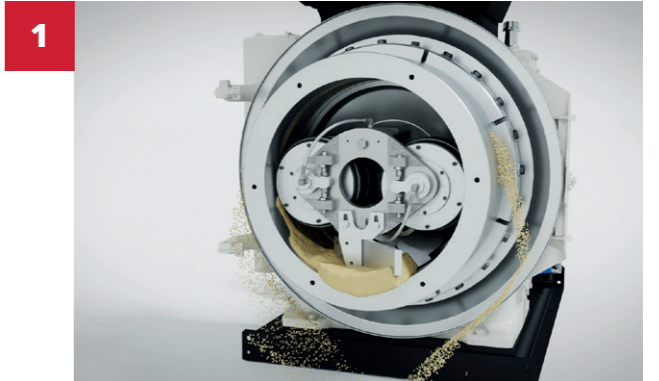
|   | Standard die roller configuration   | Twin Track die roller configuration   |
|---|---|---|
| Twin Track lowers kWh/t used                  |  |  |
| Twin Track improves retention time in the die |  |  |

# THE TWIN TRACK REVOLUTION STEP-BY-STEP



## How Twin Track transforms the pelleting process

With Twin Track, raw wood material is evenly distributed 50% left and right – just once.



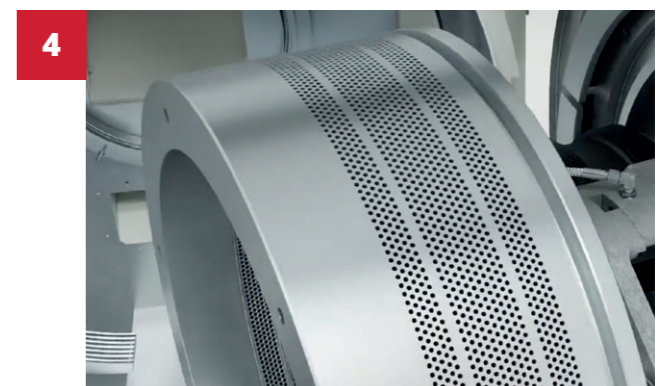
Material can be in the die for longer retention time, pressed and held under pressure, ensuring high quality pellets.



Each roller in Twin Track delivers one long push instead of several short pushes for every die revolution, which is done by a conventional 2 or 3-roller pellet mill. This means less energy in kWh/t is needed to create the pellet.



Twin Track has a higher hole count in each die, resulting in a greater volume of pellets versus a conventional 2 or 3-roller pellet mill.



# GET THE REVOLUTION INSIDE WITH TWIN TRACK



Significant energy savings, increased capacity, and a reduction in CO<sub>2</sub> emissions – Twin Track delivers what every pellet mill operator needs today in the search for optimum pelleting and competitive advantage.

Our technology has been extensively tested in real world mill operations, and runs smoothly and productively. You can benefit from our Twin Track revolution either in new CPM machines, or when retrofitted to a range of CPM machines, in as little as 4 hours.

Find out more about Twin Track now at [www.cpmeurope.nl/en/twin-track](http://www.cpmeurope.nl/en/twin-track)  
Or discuss the savings you could achieve with a Twin Track sales expert by contacting [equipment@cpmeurope.nl](mailto:equipment@cpmeurope.nl)

**Contact details for Europe,  
Middle East, Africa and Asia  
CPM Europe B.V.**

Rijder 2  
1507 DN Zaandam  
The Netherlands

General **+31 75 65 12 611**  
Sales **+31 75 65 12 620**  
Service **+31 75 65 12 640**

Email **[info@cpmeurope.nl](mailto:info@cpmeurope.nl)**  
Website **<https://cpmeurope.nl>**

**Contact details for  
the Americas**

**California Pellet Mill**  
1114 E. Wabash Ave  
Crawfordsville, IN 47933  
1-800-428-0846

Website: **<https://www.cpm.net>**



The revolution inside

California Pellet Mill is a division of CPM Inc. For more, visit [cpm.net](http://cpm.net)