

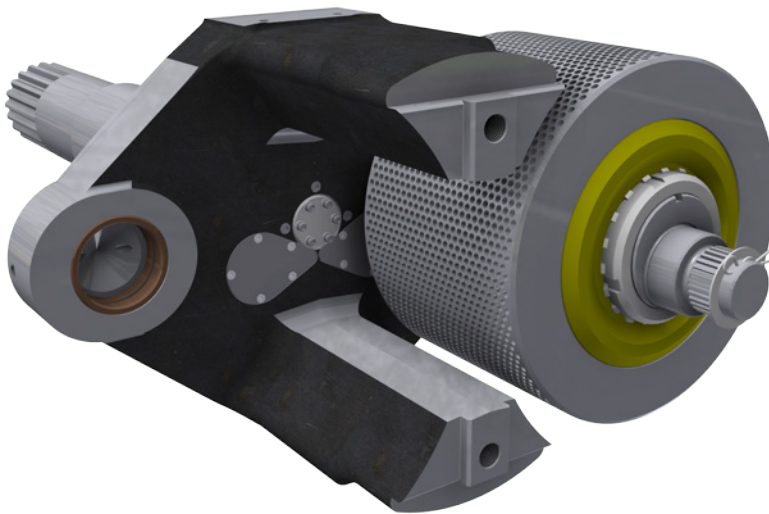
CPM Europe

Roll Speed Measurement

Less
Downtime

Better
Process Control

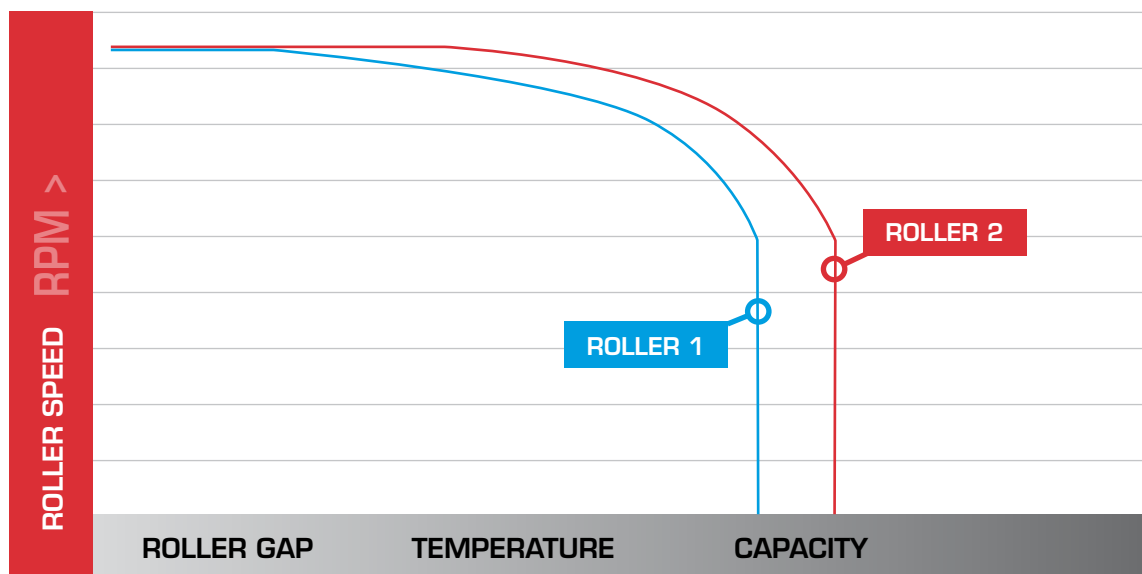
Maximum
Safety



HOW CPM OPTIMIZE YOUR PROCESS:

- Prevent chocking of pellet mill
- Optimized heat addition control
- Creates maximum throughput
- Best possible Roller gap control (With Lineator)

ROLLER SPEED INFLUENCES



CPM Europe. Your Partner in Productivity

Roll Speed Measurement

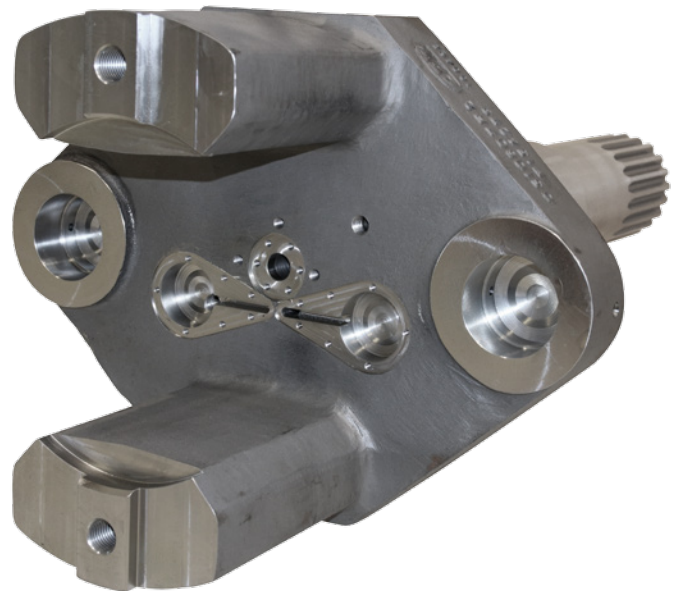
HOW CPM OPTIMIZE YOUR PELLETING PROCESS

ROLL SPEED MEASUREMENT

- Better control against overload
- Increase pellet mill capacity
- Fire protection in die cavity area
- Anti Blocking System (ABS) for pellet mills

ROLL SPEED MEASUREMENT WITH LINEATOR

- Optimum pellet quality by pre compression
- Easy “zero - positioning” rollers
- Optimum pellet mill stability
- Increase service life of dies
- Reduced energy consumption



The roll speed measurement system (RSM), measures from each roll the rotation speed and provide with this information valuable process data. The process controller can react when the roll speed is getting to low to avoid choking of the pellet mill and avoid in this way possible fire in the pellet chamber.

The pelleting process can be optimized with RSM as the roll speed is influenced by the condition temperature, pelleting capacity and the distance between roll and die. With RSM these parameters can be easily optimized by the operator to optimize the pellet quality and reduce the operating cost.

Retrofit kit available

CPM Europe B.V.
Rijder 2
1507 DN Zaandam
The Netherlands

Phone : +31 75 65 12 611
Email : info@cpmeurope.nl
www.cpmeurope.nl



GLOBAL PARTNER
SINCE 1883

CPM Europe. Your Partner in Productivity

Roll Speed Measurement

HOW CPM OPTIMIZE YOUR PELLETING PROCESS

ROLL SPEED MEASUREMENT

- Better control against overload
- Increase pellet mill capacity
- Fire protection in die cavity area
- Anti Blocking System (ABS) for pellet mills

ROLL SPEED MEASUREMENT WITH LINEATOR

- Optimum pellet quality by pre compression
- Easy “zero - positioning” rollers
- Optimum pellet mill stability
- Increase service life of dies
- Reduced energy consumption



The roll speed measurement system (RSM), measures from each roll the rotation speed and provide with this information valuable process data. The process controller can react when the roll speed is getting to low to avoid choking of the pellet mill and avoid in this way possible fire in the pellet chamber. The pelleting process can be optimized with RSM as the roll speed is influenced by the condition temperature, pelleting capacity and the distance between roll and die. With RSM these parameters can be easily optimized by the operator to optimize the pellet quality and reduce the operating cost.

CPM Europe B.V.
Rijder 2
1507 DN Zaandam
The Netherlands

Phone : +31 75 65 12 611
Email : info@cpmeurope.nl
www.cpmeurope.nl



GLOBAL PARTNER
SINCE 1883

CPM Europe. Your Partner in Productivity